

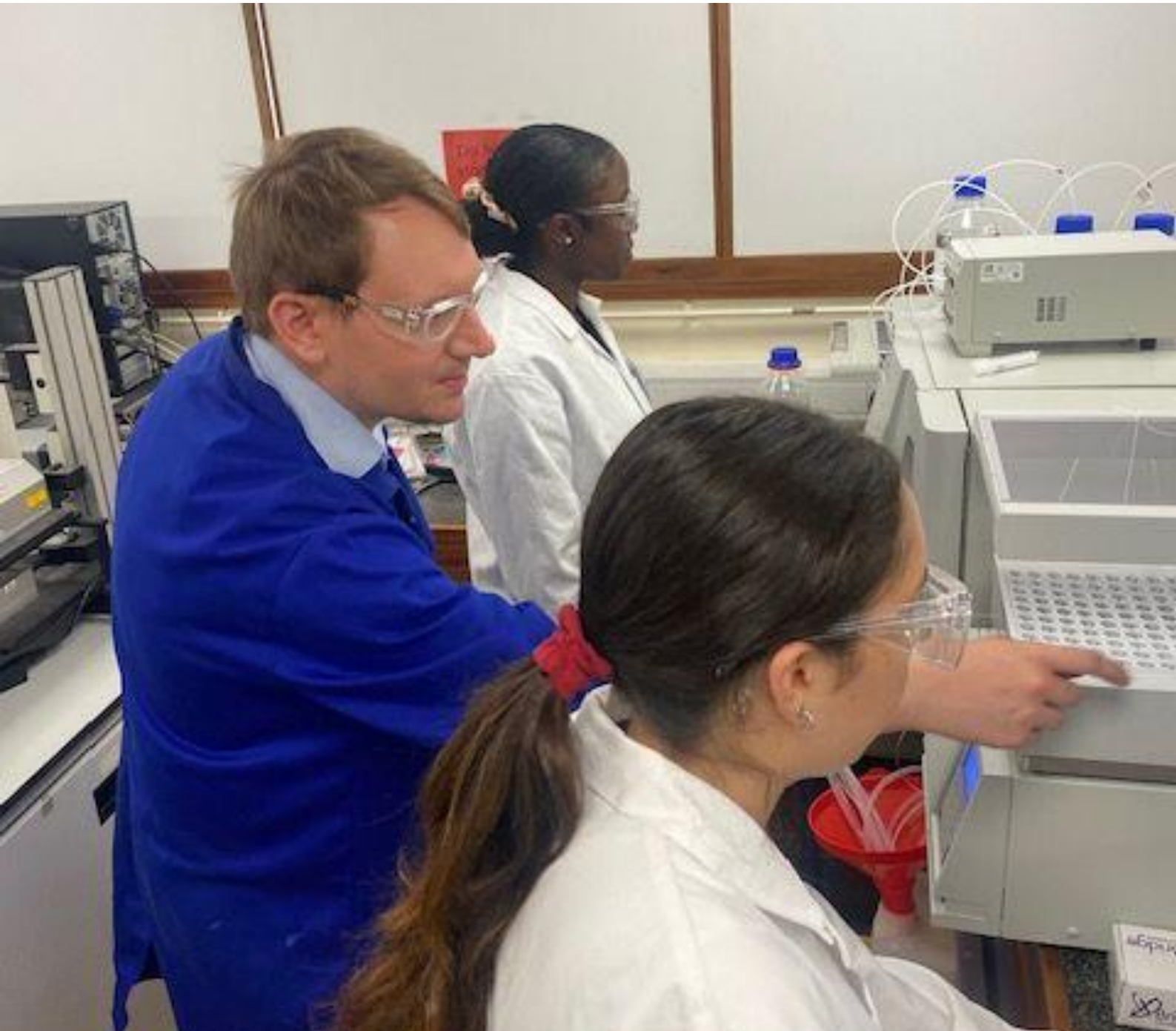


**Worshipful Company of  
Scientific Instruments**

**Case study 2024**



**The Worshipful Company of  
Scientific Instrument Makers**

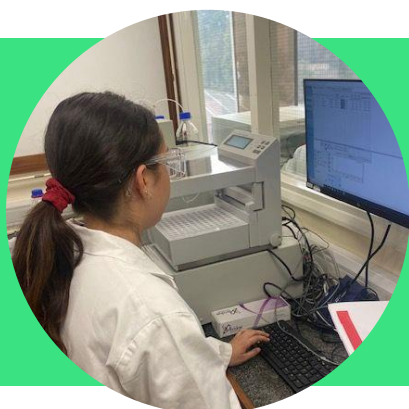


## Student case study



The Worshipful Company of  
Scientific Instrument Makers

### Ana's story



Ana struggled to find opportunities to gain practical experience in STEM environments, so was happy to be accepted onto the In2STEM programme. **The skills and knowledge gained through her In2STEM placement helped boost Ana's confidence and confirmed a future career in chemistry is the right fit for her.**

“ Exploring STEM subjects has always fascinated me, and I've found it challenging to find similar opportunities elsewhere, so this programme was a great fit for me.

The programme has taught me how experiments are actually carried out in a lab, which has been eye-opening. Being able to work with advanced equipment and conduct experiments that we wouldn't normally do in school was incredibly exciting [and] allowed me to develop practical skills I know will be essential in my future studies and career. It also made me feel more connected to the field of STEM, knowing that I can handle the challenges of real-world scientific research.

**Participating in the In2STEM programme has deepened my understanding of chemistry and helped me decide on my future path. The programme has boosted my confidence and helped me settle on this decision, knowing that it's the right fit for my interests and skills.** ”

Ana

### Hear from the placement host

“ This programme means a lot to me because it reminds me of when I was a 17-year-old student working in a research lab, that experience sparked my passion for chemistry and solidified my decision to pursue it as a career. I wanted to offer young people the same opportunity to capture and embrace a love for science, just like that placement did for me. [Hosting a placement has] been **an incredibly rewarding and joyful experience. Seeing the growth and enthusiasm of the students has made it all worthwhile.** ”



Dr Chris Marsh

## Are you looking for other ways to make a difference?

Explore our other programmes:



## In<sup>2</sup>research



## In<sup>2</sup>careers

Our year-long programme complements studies or work and helps to pave the way for postgraduate research degrees and careers. The programme includes an eight-week summer research placement, mentoring, workshops and more.

The In2careers community provides access to opportunities including employability workshops and skills clinics, peer mentoring, industry networking and events, work experience and internships.

### Partner with us

to create an impact for the future of STEM and benefit your business:

- **Sponsor** a placement, or invest your support across one or all of our programmes, to exponentially increase the impact your investment creates in building a brighter future in the STEM sector.
- **Mentor** one of our beneficiaries to share your experiences, your passion for STEM, and help ensure the next generation of STEM leaders and innovators reach their full potential.
- **Lead** a workshop to share your expertise, skills, and experience to help individuals from underrepresented backgrounds explore the exciting world of STEM.
- **Host** a placement opportunity for individuals from underrepresented backgrounds, helping us strengthen diversity in the sector, break down barriers, and nurture innovation for the future of STEM.

Visit [in2scienceuk.org](https://in2scienceuk.org) or email [development@in2scienceuk.org](mailto:development@in2scienceuk.org) and find out how you can get involved today.